

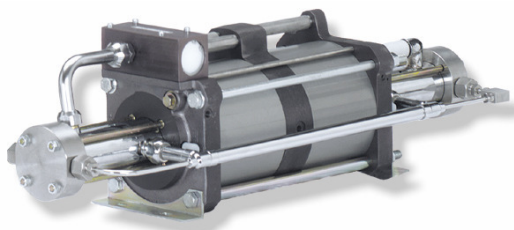
MAXIMATOR®

Maximum Pressure.



High Pressure Technology • Testing Equipment
Hydraulics • Pneumatics

Technical Data Sheet



DLE 30-2
double acting, double air drive head
single stage

Gas booster DLE 30-2

Technical Data:

| | |
|------------------------------------|--------------------------|
| Air drive pressure pL: | 1-10 bar / 14,5 - 145psi |
| Pressure ratio i: | 1:60 |
| Compression ratio | 1:20 |
| Minimum suction pressure pA: | 20 |
| Maximum suction pressure pA: | 600 bar |
| Maximum outlet pressure pB: | 600 bar |
| Displacement volume/double stroke: | 120 cm ³ |
| Maximum cycles: | 100 / min |
| Stall pressure: | $PB = i * pL + pA$ |

Standard Connections:

| | |
|-------------------------------|----------------------|
| Air drive: | 3/4 BSP |
| DLE 30-2 (-GG) | Inlet/Outlet: 1/4BSP |
| Maximum operating temperature | 100°C |
| Net weight: | 23 kg |

Pressure and flow performances, please see enclosed graph.

Materials of construction hp section DLE 30-2:

| | |
|------------------------|-------------|
| Standard seal package: | PTFE, Viton |
| Compressor head: | 1.4305 |
| HP cylinder: | 1.4542 |
| HP piston: | 1.4305 |
| Fittings: | 1.4305 |
| Balls: | 1.4034 |
| Springs: | 1.4310 |

Approximate Dimensions:

| | |
|---------|--------|
| Length: | 795 mm |
| Width: | 181 mm |
| Height: | 233 mm |

Available Options:

| | |
|------------------------------|----------------|
| Inert gas service (standard) | DLE 30-2 (-GG) |
| Oxygen service: | DLE 30-2-GG-S |
| CO ₂ service: | DLE 30-2-GG-C |
| In-/Outlet: 9/16-18UNF | DLE 30-2-UU |
| In-/Outlet: 1/4NPT | DLE 30-2-NN |

Available Accessories:

| | |
|--|---|
| Air control units with filter pressure regulator, control pressure gauge and shut off valve: | DLE 30-2 with C2 |
| To protect the booster against excessive outlet pressures or to limit the outlet pressure, a safety valve can be fitted to the air control unit in the air drive line: | DLE 30-2 with C2/SVair (The required outlet pressure has to be indicated.) |

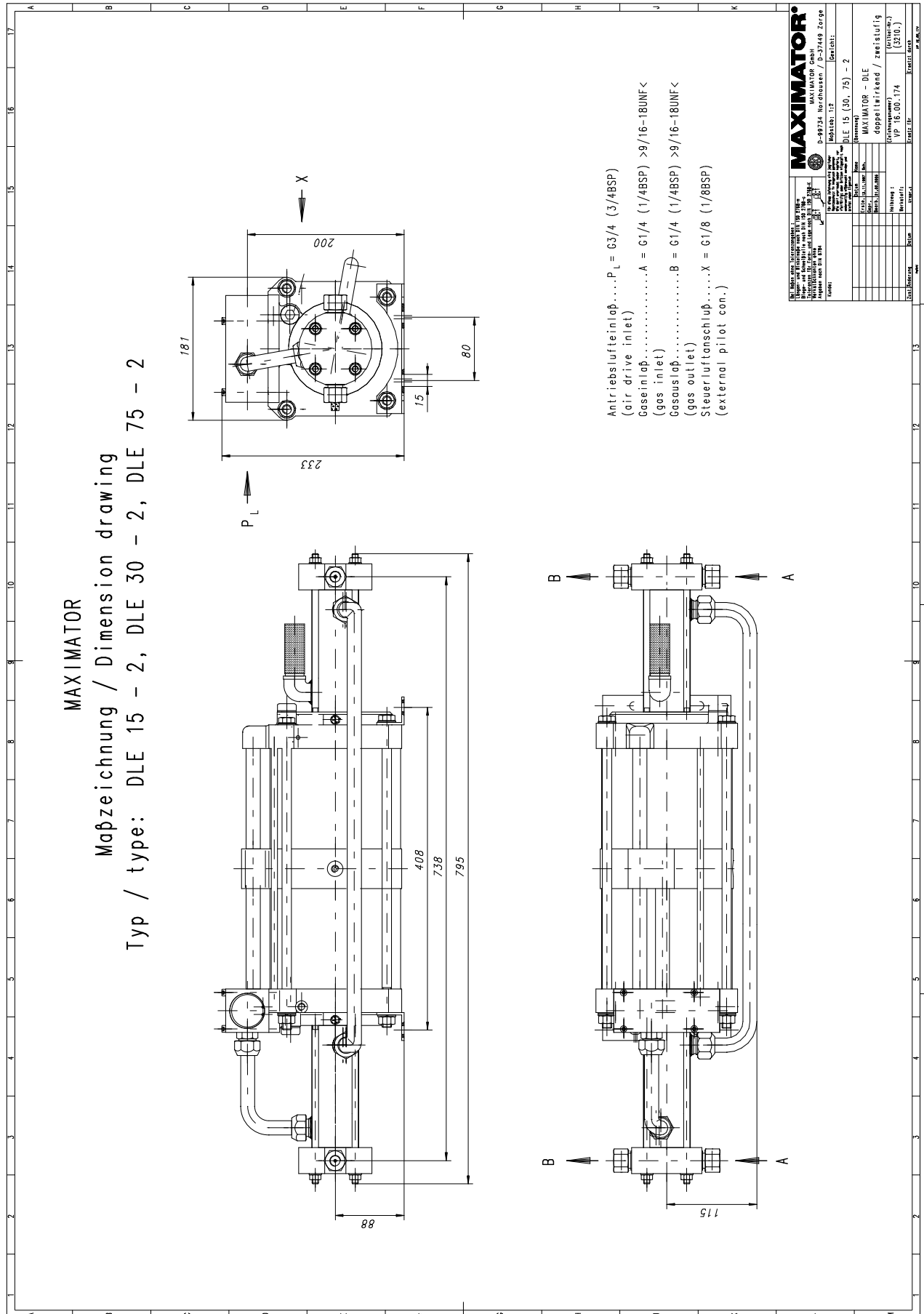
Please consult factory for more information. All technical and dimensional information subject to change. All General Terms and Conditions of sale, including limitations of our liability, apply to all products and services sold.

MAXIMATOR®

Maximum Pressure.



High Pressure Technology • Testing Equipment
Hydraulics • Pneumatics



MAXIMATOR®

Maximum Pressure.



High Pressure Technology • Testing Equipment
Hydraulics • Pneumatics

