

# MAXIMATOR®

## Maximum Pressure.

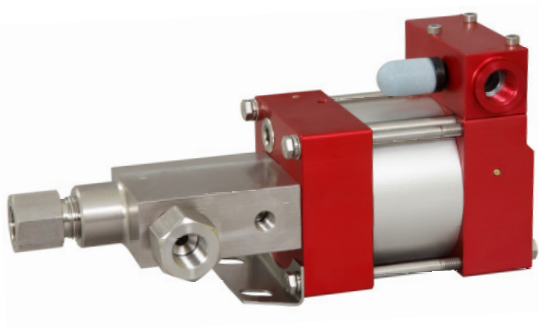


High Pressure Technology • Testing Equipment  
Hydraulics • Pneumatics

### Technical Data Sheet

### MSF72(L)

» Special liquids



MSF72(L)  
single acting, single air drive head and  
distance piece  
(Standard= Bottom inlet)

#### Technical Data:

Air drive pressure: 1-10 bar / 14,5 - 145psi

Calculated Outlet Pressure at an air drive of 10 bar/145 psi: 860 bar/ 12,479 psi

Pressure ratio: 1:86

Displacement volume/double stroke 1.5 cm<sup>3</sup>/ 0.09 cu.inch

#### Connections:

Inlet: Standard: Bottom Inlet 3/8 BSP

Outlet: 3/8 BSP

Air drive: 3/8 BSP

Maximum operating temperature: 60°C

Net weight: 3.5 kg

Pressure and flow performances, please see enclosed graph.

#### Wetted materials of construction:

Seal package: MSF72(L): Filled Teflon (PTFE) Fluorcarbon (V)

Pump Body: 1.4571

Piston: 1.4571

Fittings: 1.4305

#### Approximate Dimensions:

Height: 247 mm

Depth: 112 mm

Width: 108 mm

#### Available Options:

Side inlet MSF72(L)S

Special inlet and outlet ports, i.e. NPT MSF72(L)-NPT

Special seal material to handle special fluids on request.

#### Available Accessories:

Air control units with filter pressure regulator, control pressure gauge and shut off valve: MSF72(L) with C1

To protect the pump against excessive outlet pressures or to limit the outlet pressure, a safety valve MSF72(L) with C1/SVair (The can be fitted to the air control unit in the air drive line: required outlet pressure has to be indicated.)

**Please consult factory for more information.** All technical and dimensional information subject to change. All General Terms and Conditions of sale, including limitations of our liability, apply to all products and services sold.



### Leistungsdiagramm/Performance Graph M(O)(SF) 72

Prüfflüssigkeit/Test Liquid: Wasser-Öl-Emulsion/Water Oil Emulsion ca. 1 - 10 cst

