

MAXIMATOR®

Maximum Pressure.



High Pressure Technology • Testing Equipment
Hydraulics • Pneumatics

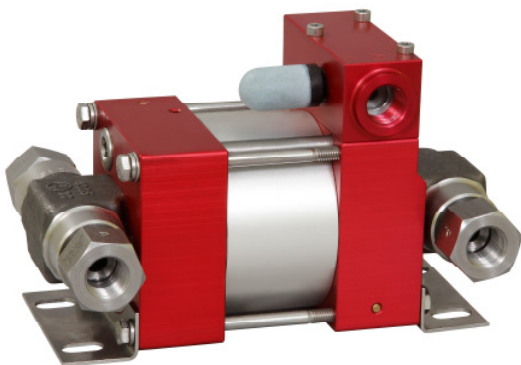
Technical Data Sheet

M189D

» Oil service

M189DVE

» Water service



M189D
double acting, single air drive head
(Standard= Side inlet)

Technical Data:

Air drive pressure:	1-10 bar / 14,5 - 145psi
Calculated Outlet Pressure at an air drive of 10 bar/145 psi:	2,200 bar/ 31,900 psi
Pressure ratio:	1:220
Displacement volume/double stroke	1.2 cm ³ / 0.07 cu.inch

Connections:

Inlet:	Standard: Side Inlet 3/8 BSP
Outlet:	3/8 BSP
Air drive:	3/8 BSP
Maximum operating temperature:	60°C
Net weight:	3.7 kg

Pressure and flow performances, please see enclosed graph.

Wetted materials of construction:

Seal package:	M189D: Polyurethan, NBR M189DVE: UHMWPE, FKM
Pump Body:	1.4305
Piston:	1.4112 (hardened)
Fittings:	1.4104

Approximate Dimensions:

Height:	195 mm
Depth:	104 mm
Width:	112 mm

Available Options:

Seal material for oil service:	M189D
Seal material for water service:	M189DVE
Liquid inlet	Standard: side inlet, bottom inlet not available
Special inlet and outlet ports, i.e. NPT	M189D-NPT M189DVE-NPT

Special seal material to handle special fluids on request.

Available Accessories:

Air control units for M series with filter pressure regulator, control pressure gauge and shut off valve: M189D with C1

To protect the pump against excessive outlet pressures or to limit the outlet pressure, a safety valve can be fitted to the air control unit in the air drive line: M189D with C1/SVair (The required outlet pressure has to be indicated.)

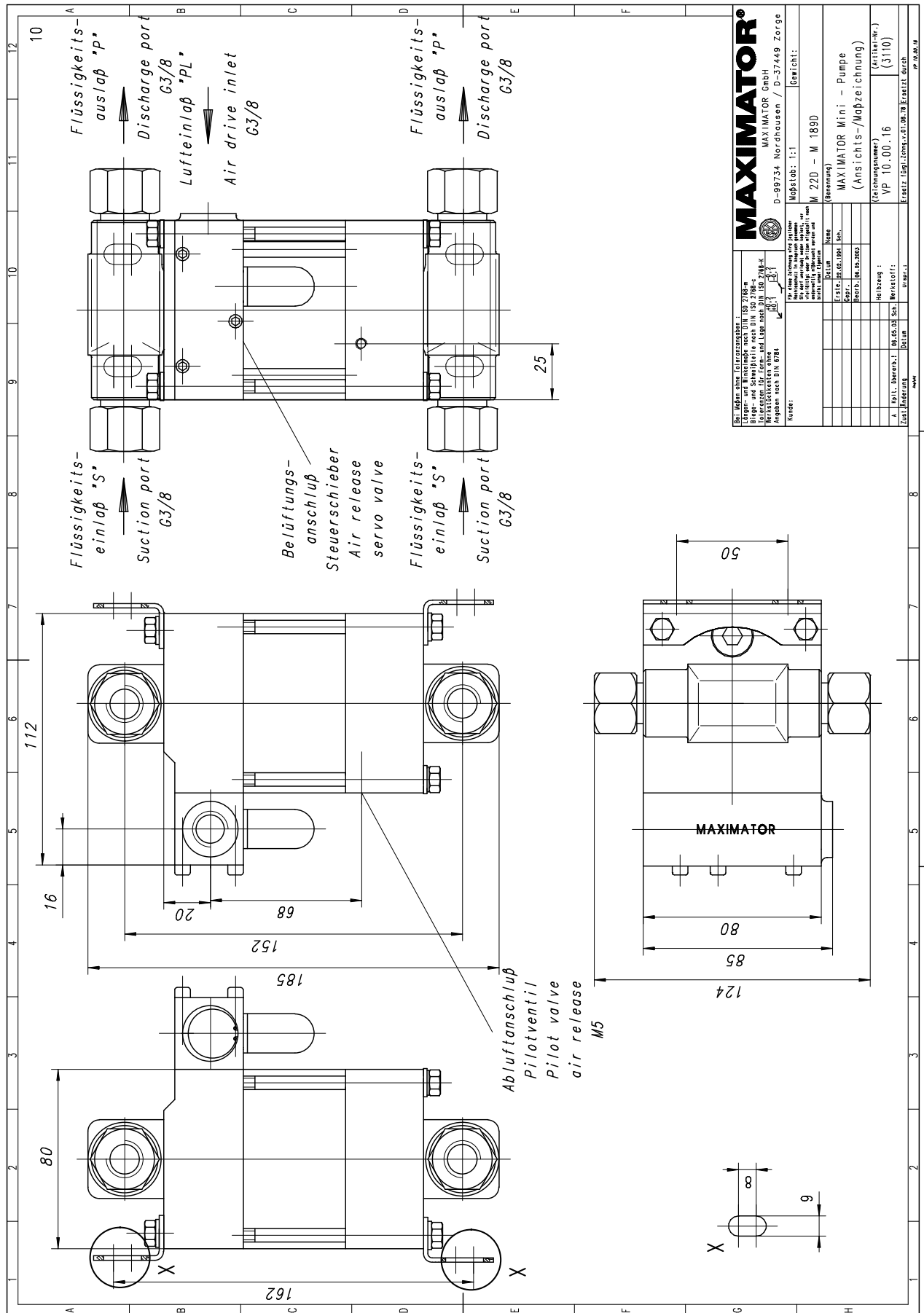
Please consult factory for more information. All technical and dimensional information subject to change. All General Terms and Conditions of sale, including limitations of our liability, apply to all products and services sold.

MAXIMATOR®

Maximum Pressure.

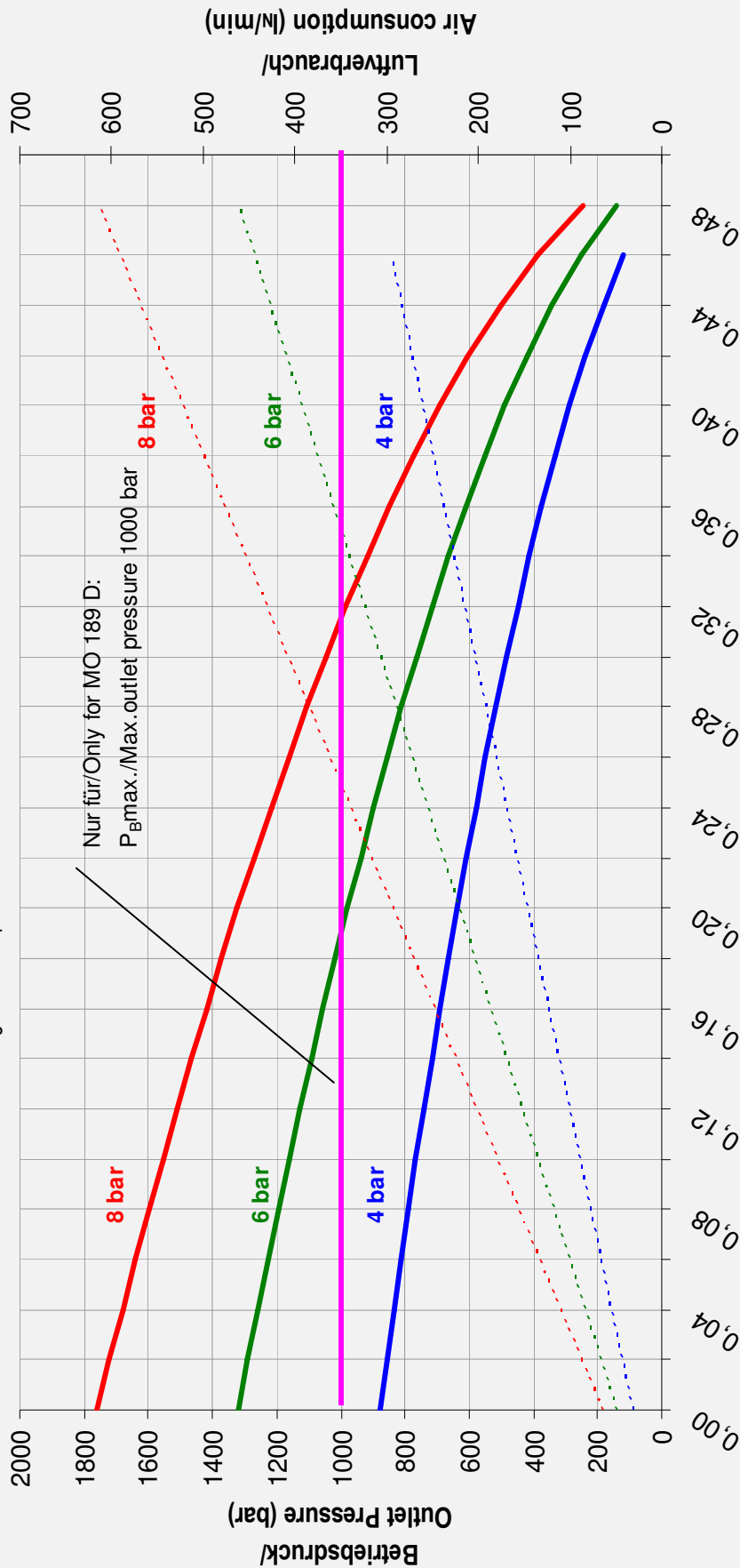


High Pressure Technology • Testing Equipment
 Hydraulics • Pneumatics



Leistungsdiagramm/Performance Graph M(O) 189 D

Prüfflüssigkeit/Test Liquid: Wasser-Öl-Emulsion/Water Oil Emulsion ca. 1 - 10 cst



Nur für/Only for MO 189 D:
P_Bmax./Max.outlet pressure 1000 bar

- Betriebsdruck bei/Outlet Pressure at 4 bar
- Betriebsdruck bei/Outlet Pressure at 6 bar
- Betriebsdruck bei/Outlet Pressure at 8 bar
- - - Luftverbrauch bei/Air consumption at 4 bar
- - - Luftverbrauch bei/Air consumption at 6 bar
- - - Luftverbrauch bei/Air consumption at 8 bar