

MAXIMATOR®

Maximum Pressure.



High Pressure Technology • Testing Equipment
Hydraulics • Pneumatics

Technical Data Sheet

M111-3 (L)

» Oil and Water service



M111-3 (L)
single acting, tripple air drive head
(Standard= Bottom inlet)

Technical Data:

Air drive pressure:	1-10 bar / 14,5—145 psi
Calculated Outlet Pressure at an air drive of 10 bar/145 psi:	2,500 bar/ 36,250 psi
Pressure ratio:	1:391
Displacement volume/double stroke	1.0 cm ³ / 0.06 cu.inch

Connections:

Inlet:	Standard: Bottom Inlet 1/4 BSP
Outlet:	9/16-18UNF
Air drive:	3/8 BSP
Maximum operating temperature:	60°C
Net weight:	4.6 kg

Pressure and flow performances, please see enclosed graph.

Wetted materials of construction:

Seal package:	M111-3(L): Polyurethan, NBR
Pump Body:	1.4305
Piston:	1.4112 (hardened)
Fittings:	1.4104

Approximate Dimensions:

Height:	255 mm
Depth:	100 mm
Width:	112 mm

Available Options:

Side inlet	M111-3(L)S
Special inlet ports, i.e. NPT	M111-3(L)-NPT
Special seal material to handle special fluids on request.	

Available Accessories:

Air control units for M series with filter pressure regulator, control pressure gauge and shut off valve: M111-3(L) with C1

To protect the pump against excessive outlet pressures or to limit the outlet pressure, a safety valve M111-3(L) with C1/SVair (The required outlet pressure has to be indicated.) can be fitted to the air control unit in the air drive line:

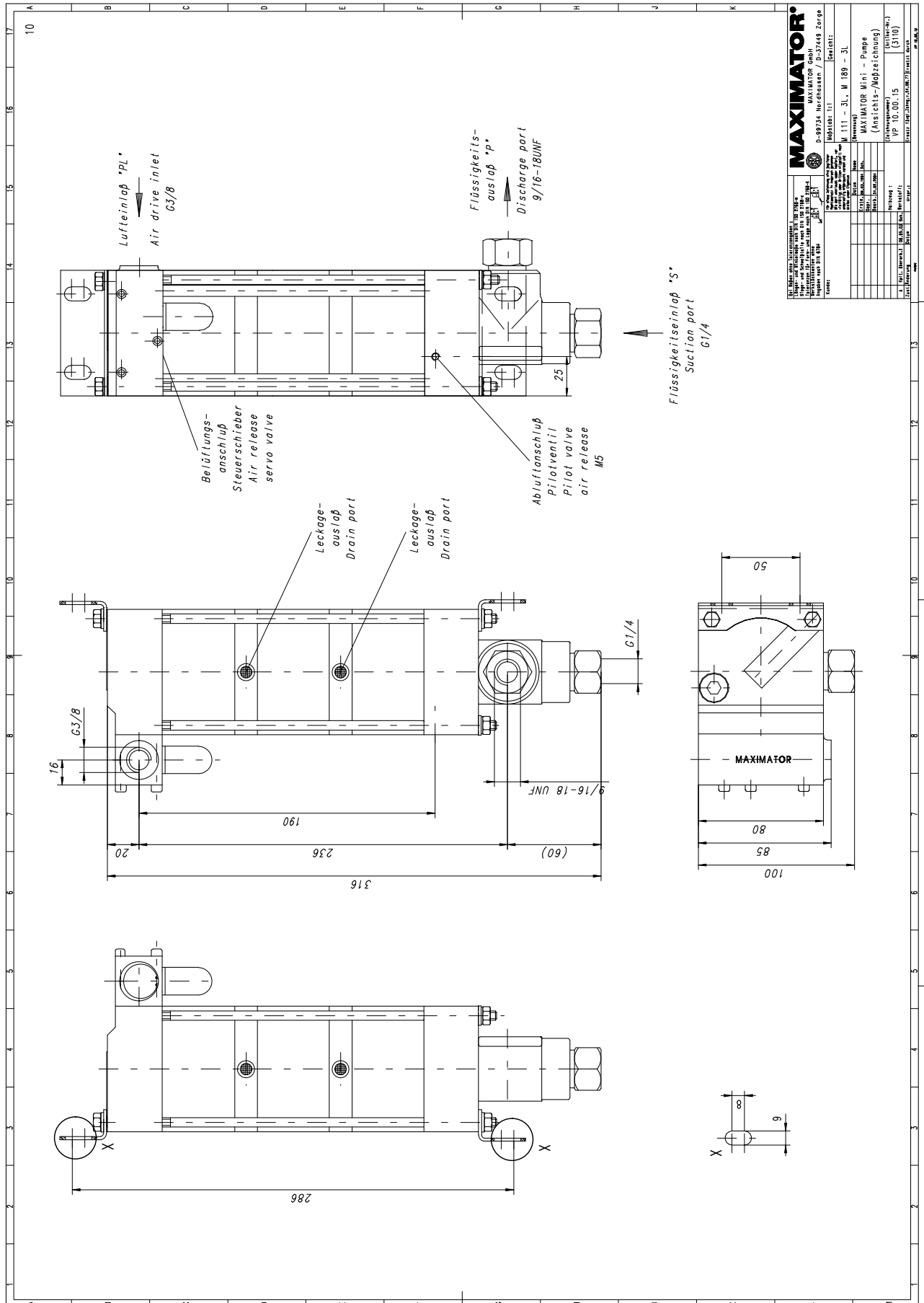
Please consult factory for more information. All technical and dimensional information subject to change. All General Terms and Conditions of sale, including limitations of our liability, apply to all products and services sold.

MAXIMATOR®

Maximum Pressure.



High Pressure Technology • Testing Equipment
Hydraulics • Pneumatics



Leistungsdiagramm/Performance Graph M 111 -3L

Prüfflüssigkeit/Test Liquid: Wasser-Öl-Emulsion/Water Oil Emulsion ca. 1 - 10 cst

